

Agenda

National Extension – ECOP

CDC-HOP National

Clemson Extension – mission alignment, etc. characteristics of Extension

Clemson HOP/Counties

Example (align with the SWOT)

- Hampton County with HMMHSC

- Open use agreements

- Re-energizing the open use agreements/Connecting campus areas

Case study (align with the SWOT)

- Lee County walk audit in partnership with 4-H

- Park Audits

- Cross Walk

SWOT

- Brainstorm SWOT of Strategy for Extension Partnership for PSE for PA

- Share

- Group discussion

Future HOP

Engaging Communities for Policy Systems and Environmental Change – Experiences from a CDC-HOP grantee

Sarah Griffin PhD, MPH

Michelle Parisi, PhD, RDN, LD

WHAT IS A

Land-Grant University?

A land-grant university (LGU) is a college or university that has special designation and receives federally mandated dollars based on the Morrill Acts of 1862, 1890, and subsequent legislation. LGUs were created to provide the population with practical education relevant to their daily lives.

Mission

Land-grant universities receive special legislative funding to complete the three-fold mission of research, teaching, and Extension.

Research



LGUs receive funding to conduct research related to agricultural and behavioral sciences.

Teaching



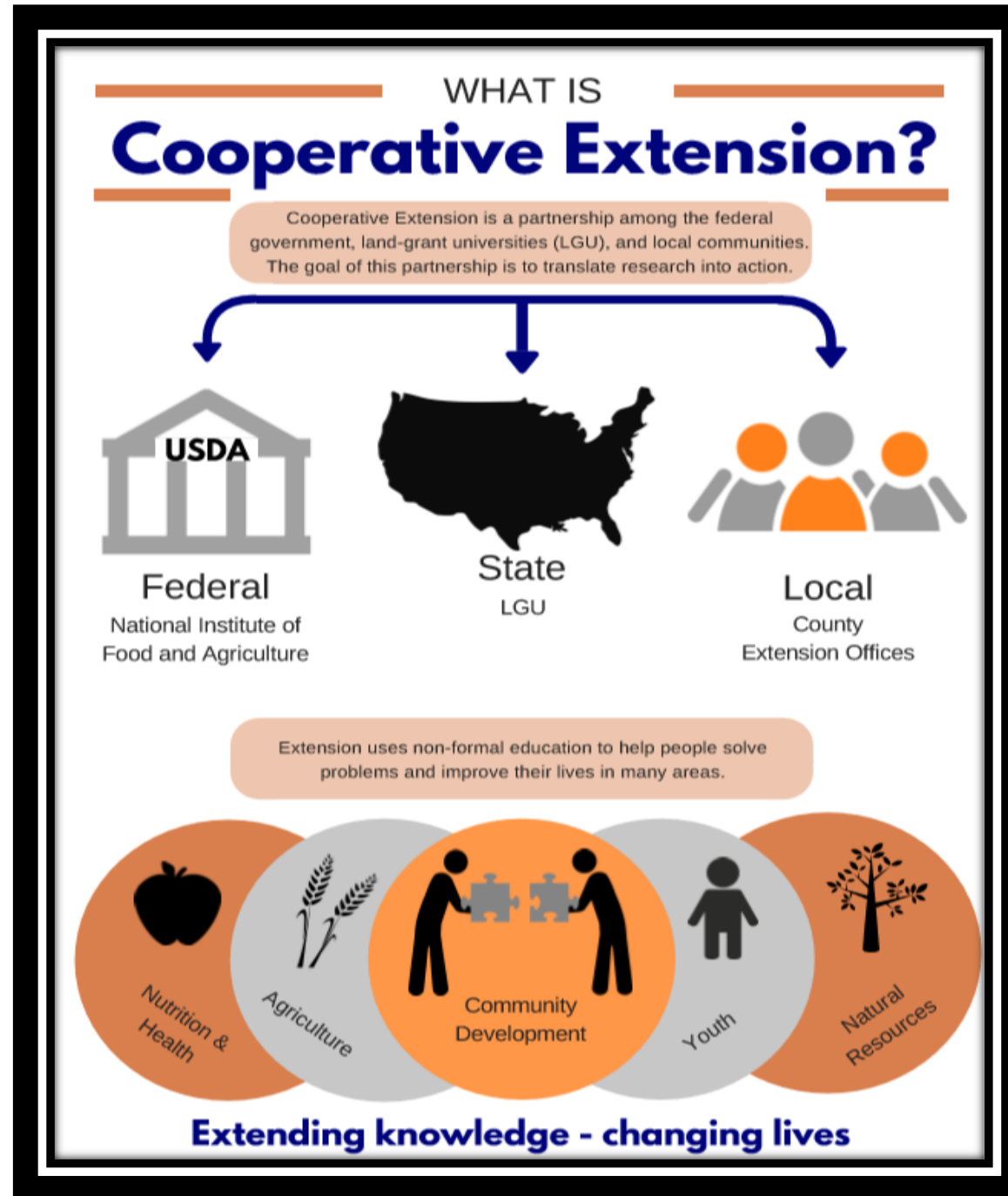
LGUs provide formal education in scientific fields related to agricultural and behavioral sciences.

Extension

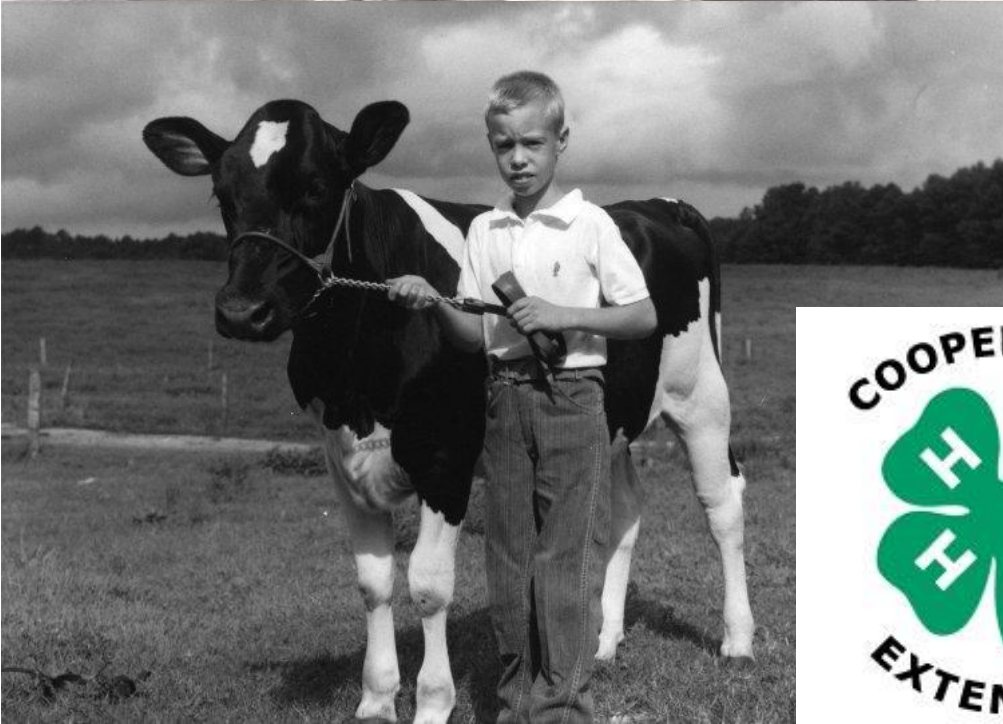
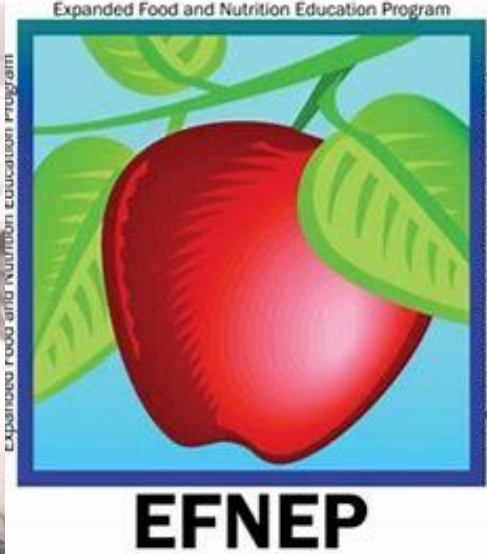


Extension provides guidance to help communities solve everyday challenges.

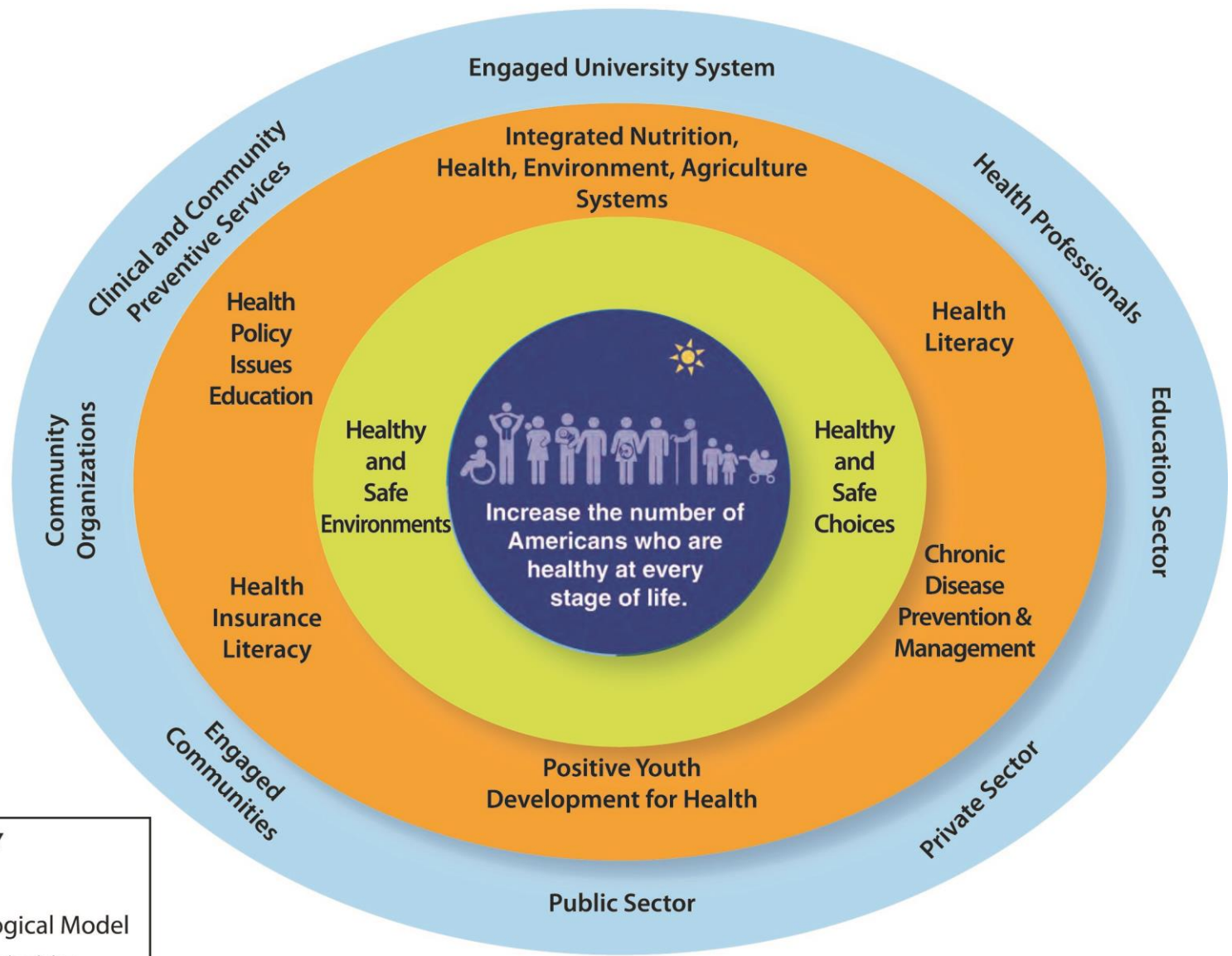
National Cooperative Extension Service







Cooperative Extension's National Framework for Health & Wellness



KEY

- Outcome
- Social-Ecological Model
- Extension Priorities
- Partners

CDC: High Obesity Prevention: HOP

DNPAO's High Obesity Program (HOP) Recipients
(Fiscal Year 2018)



DNPAO's High Obesity Program (HOP) Recipients
(Fiscal Year 2023)



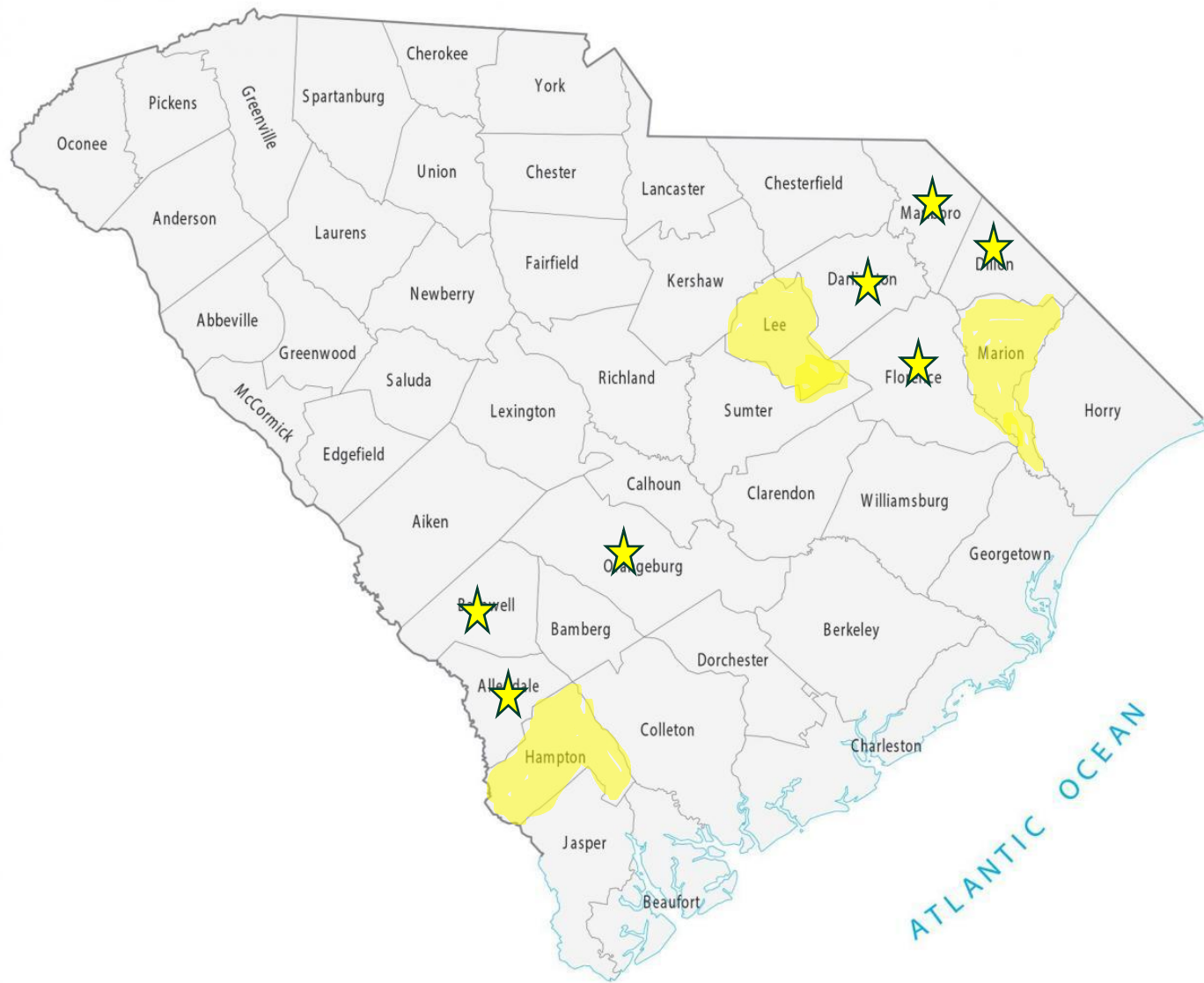


CDC: High Obesity Program

- Increase Access to Healthy Food
- Safe Accessible Places for Physical Activity
- Family Weight Management
- Early Care and Education Settings

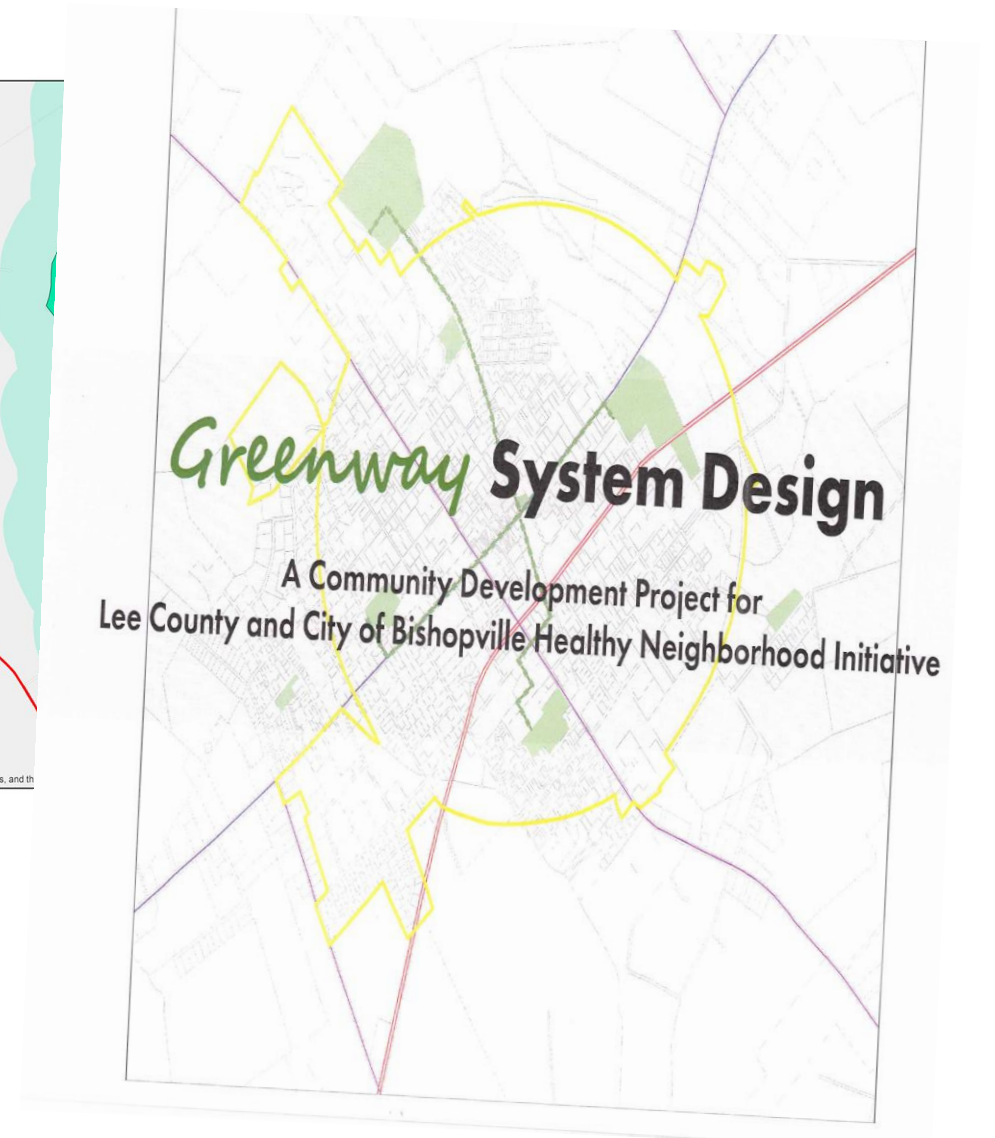
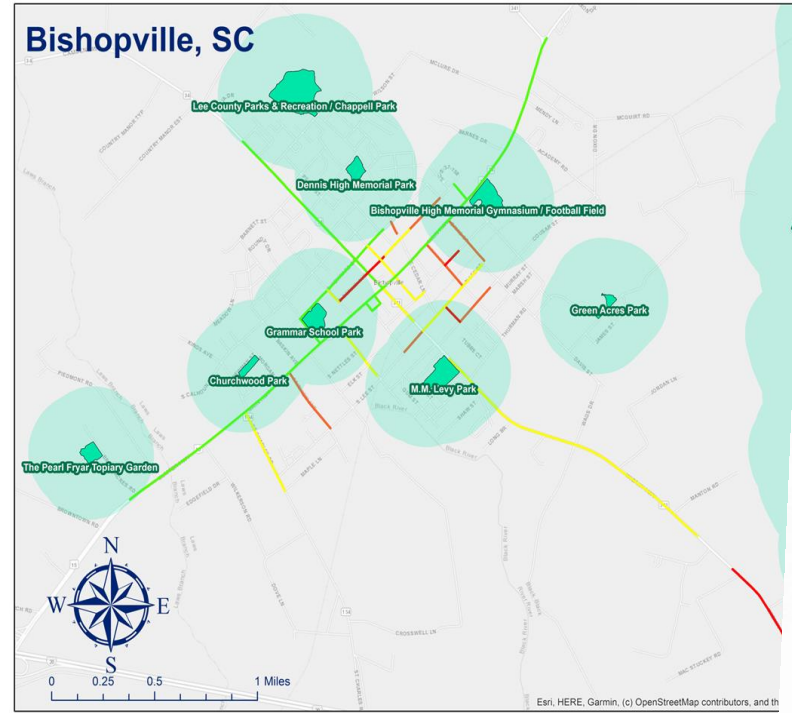


SC: HOP

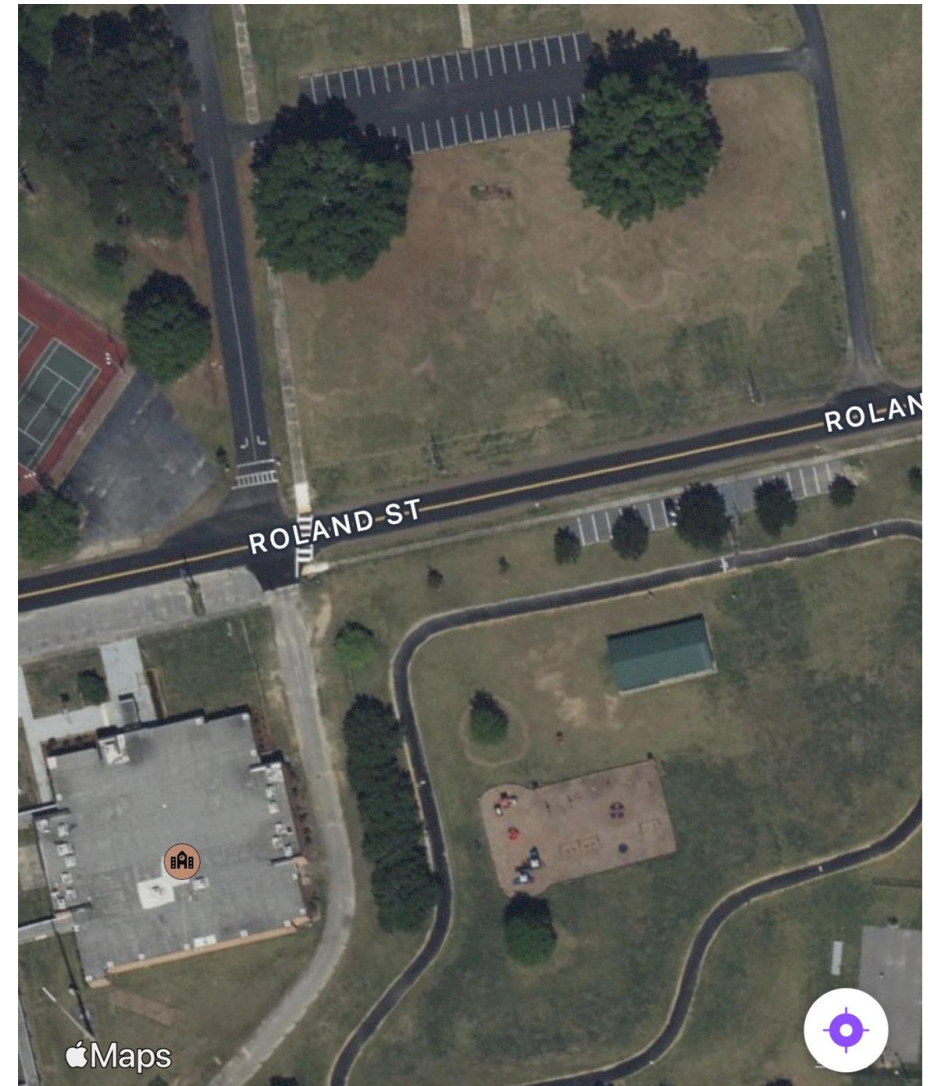


#HOP4Health
#HOP4HealthEquity

2018-2023 Examples at Work – Bishopville

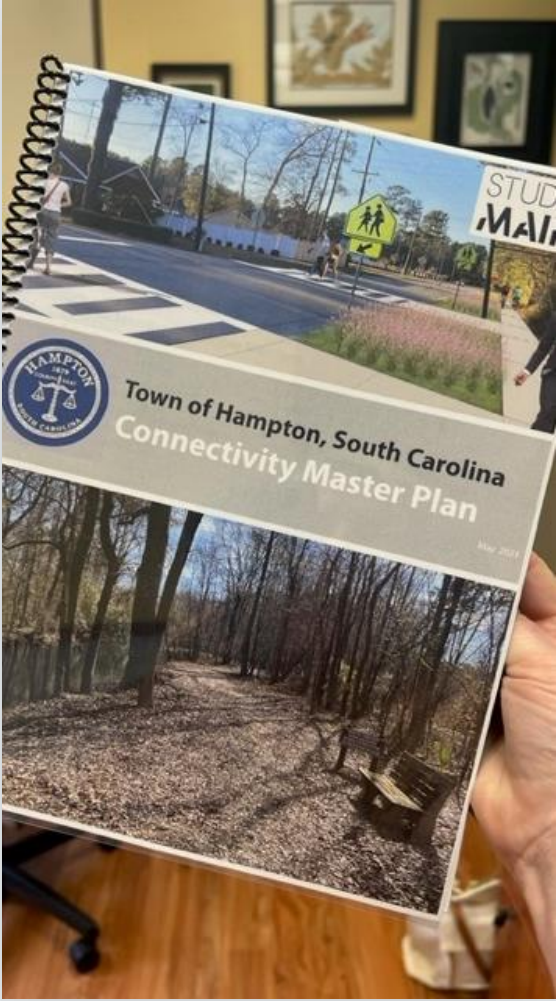


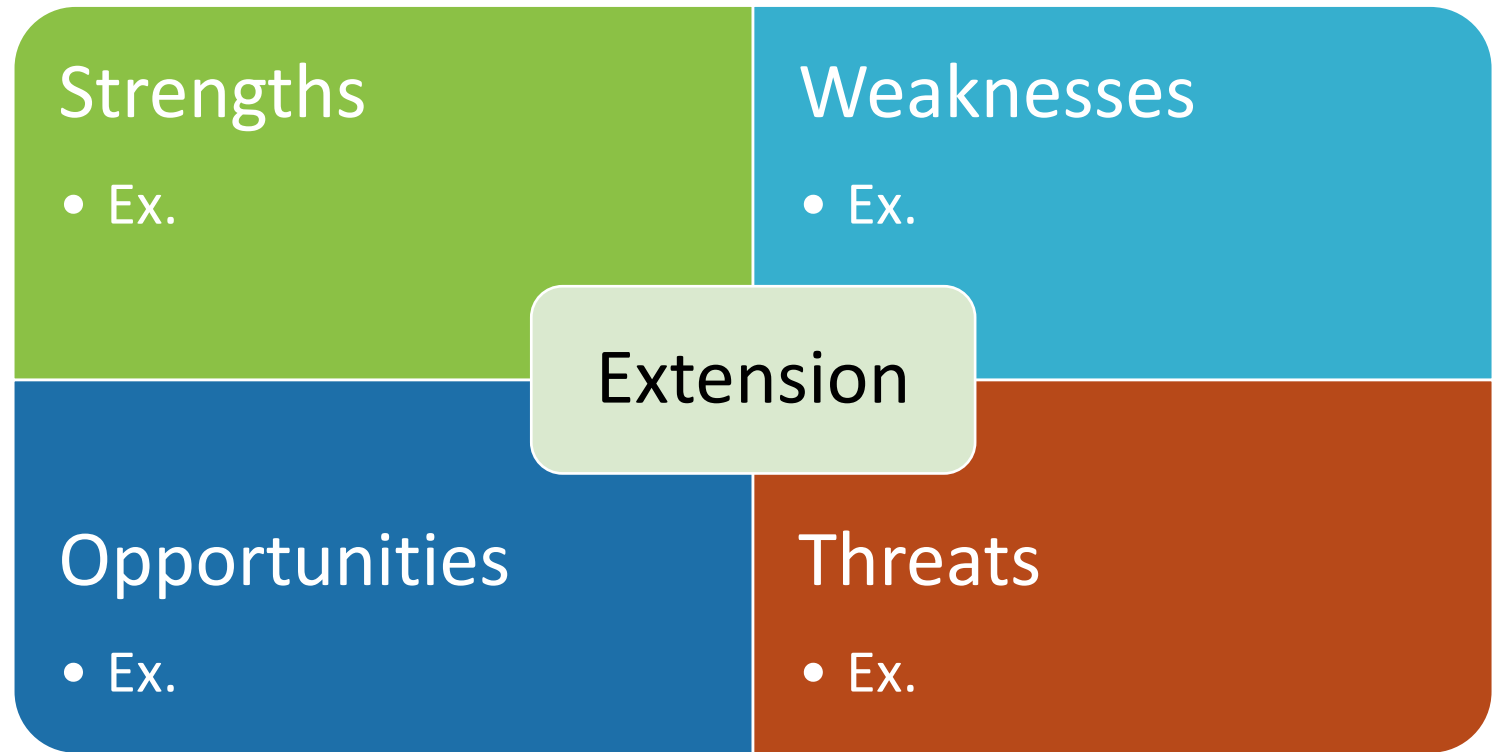
2018-2023 – Examples at Work: Bishopville, SC



2018-2023: Examples at Work

Hampton SC





SWOT

Extension's Strengths, Weaknesses, Opportunities, and Threats

Group of 2 or 3 at each post it – brainstorm SWOTs for working with Extension for PSE in PA

Future HOP in SC

2023



Thank you!

Questions

